



4 Bay Hard Drive Non-RAID Enclosure



User Manual

Model : 804PM6G

How to install the Hard Drive



For 3.5", loose the both side HDD locks, then insert the HDD (you also can remove the side HDD locks and install the 3.5" HDD with the attached screw driver and screws)



For 2.5", remove the both side HDD locks, make the holes on the hard drive align with the tray's, use the attached screw driver to install.



For 2.5", Remove the side lock



Make the holes on the hard drive align with the bottom



Use the attached screw driver and screws to install



loose the side HDD lock

Insert the 3.5" HDD



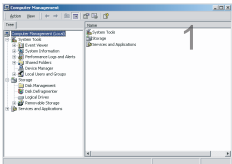
! NOTE:

If your external HDD does not appear as a disk in "My PC" (when it is new), you will need to format it and create a new partition to use it.

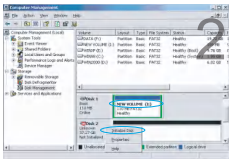
! NOTE:

If the HDD is not new, and you format it you will lose all the data files that were in the disk and you will not be able to recover them.

Partition and Format



Right click on "My Computer" icon and select "Manager". When this window appears, select "Disk Management".



Right click on the disk on "New Volume" and select "Initialize Disk".

Please Note:

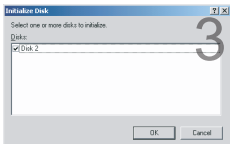
Most of HDD trays with two screw holes at the bottom for inside trays to match it. But some of HDDs with only one hole like Seagate 20TB need to be processed by hand.

Cut one raised part on the right side like the image showing !!!

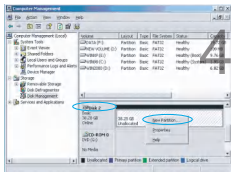
(Reference picture) Please use a screwdriver to open the blue clasp on the side if you've bought WD HDD with 20TB, to fix HDD with screws.

With the tool-free structure, just pull up the blue clasp on both sides of the bracket with your fingers, put down your hard disk gently, then go ahead to use.

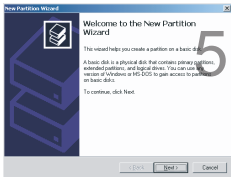




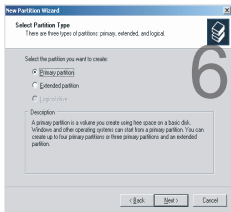
Select the new disk to start with the configuration.



When new disk appears, right click on it and select "New partition".

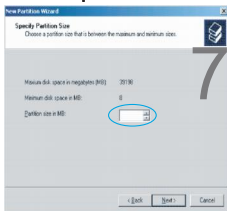


When the wizard window appears, click on [Next].

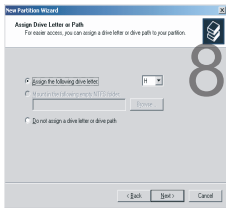


Select "Primary Partition" and click on [Next].

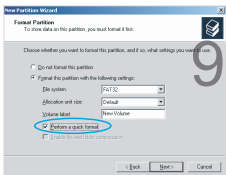
Product Specifications



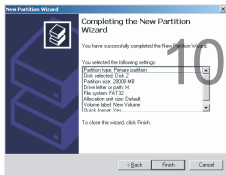
Select the partition size We recommend to use as maximum and click on [Next].



Select the drive letter to sign the hard disk and click on [Next].



Select the format settings: "FAT 32", "DEFAULT" and Volume Label (Select the features that you need to format: "FAT32", "Predetermined", the CD label that you need (example: "New Volume") and "Perform a quick format".



New partition is complete and your hard disk is ready to be used. Click on [Finish].

Product structure

Chip	JMS567+JMB575
Supported Devices	Supports standard 2.5/3.5 inch SATA/II/III HDDs and SSDs
Cooling Fan	Fan
External Interface	USB 3.0 A/C & eSATA
Maximum Data Transfer Rate	USB 3.0 A/C (MAX 5Gbps) / USB.2 0 (MAX 480Mbps) / ESATA (MAX 3Gbps)
OS Support	Windows 2000/ Me/ XP /Vista/ 7/ 8 /8.1/10 above, Mac OS 9.1/10. above
Power	12V5A power supply
Plug and play	Support
Material	Aluminum
Package Contents	4Bay Hard Drive Enclosure, USB 3.0 Cable, eSATA Cable, USB C Cable, Mounting screws and driver ,User Manual ,12V Power Adapter
Please Note	HDD is not included

• If you need any technical help, please contact us at cenmate23@outlook.com.

Feature

Wide Application :

Fit for 2.5"/3.5" HDD and SSD

Tool Free Installation :

No need any tools or screws to install for 3.5 inches hard drive.

Plug and Play :

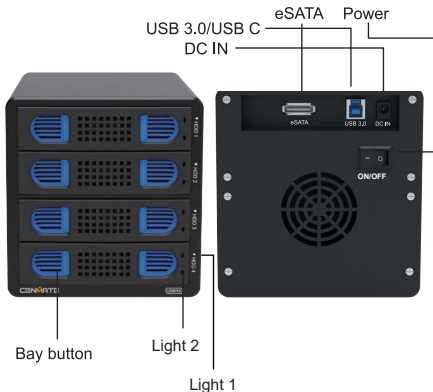
Compatible with Windows, Linux, Mac OS system, no driver needed.

Excellent Heat Dissipation :

Aluminum case with built-in fans

Max 5Gbps Data Transfer

Product structure



Light 1: Fault Indicator Light

When the hard drive is connected and working normally, the light is blue.

Light 2: Drive Read/Write Signal Light

When this light flashing red, it means that the PC is reading/writing the data from the hard drive. When the PC finish the process of reading/writing, the red light will not flash and stop working.